

B&B Bulletin

August 2010

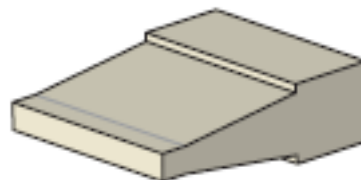
TruStile New Options

To support TruStile's goal of continually expanding and improving their product line, they are pleased to announce several new product options and enhancements. Their new product options include two dramatic "senior" panel profiles, a sleek, modern molding profile and several new standard sash options. Their product enhancements include an Engineered LVL stile option for MDF pocket doors, a change to their stile width rules that addresses customer feedback and a new method for glazing exterior glass and mirror doors that conceals the back side of the sticking on those doors. Some of these changes are detailed below. For a comprehensive look at all of the changes you can download a PDF from our newsletter section on bbwood.com

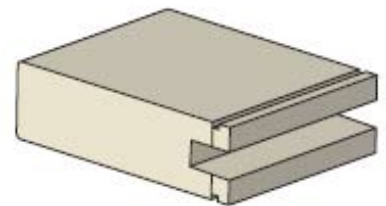
In this Issue ...
Product Info pg 2 -
Glass Door
Terminology



Senior "E" Panel



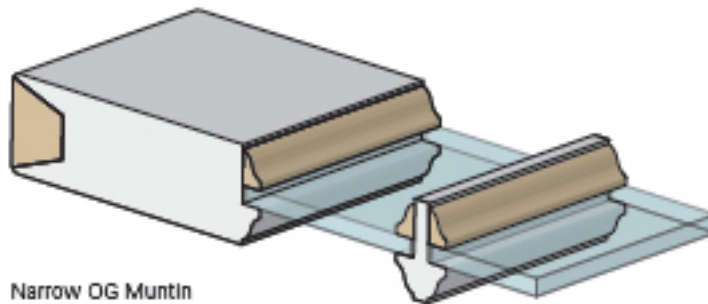
Senior "F" Panel



Quirk Sticking

Senior panels have an extensive bevel relief, 2-5/8". Panels thicker than standard panels.

(Quirk not available on tru-divided doors)

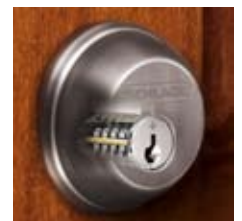


Narrow OG Muntin Bar Profile (7/8" wide)

7/8" wide muntin bar now available on all doors in lieu of the standard 1-1/2" wide muntin bar

Schlage SecureKey Update

We have begun receiving shipments of Schlage SecureKey locks and deadbolts. For a limited time, if we ship an order including SecureKey, we will ship one free blank "blue rekeying key" for orders that do not specify specific keying instructions. To re-key a SecureKey lock you will need to cut the "blue key" to the customer's key number. Please note that you cannot re-key a SecureKey with your existing keying kit! Also for a limited time B&B will cut the "blue key" to your key number if requested at no charge. For those customers who do not own a key punch or key duplicating machine B&B will offer a special promotion to assist you in becoming a SecureKey specialist. Please contact our office for more information. If you intend to key your order to a master key system please alert us when placing your order (SecureKey cannot be mastered).



Schlage new interactive site: www.consumer.schlage.com



B&B Wood Products.
26301 Richmond Road
Bedford Hts., OH 44146
Tel: 216-292-6555
Fax: 216-292-6584
Web: www.bbwood.com
E-mail:
sales@bbwood.com

Glass Door Terminology



This month's article will clear up some confusion on the different methods that manufacturers use to glaze their doors and explain some of the common terminology used with glass doors.

Tru-Divided Light (TDL) glass doors generally refer to doors with multiple (individual) lights of glass separated by a wood muntin bar. Prior to the last decade most TDL glass doors (sometimes referred to as "French Doors") were glazed with wood stops (also referred to as "sticking", "glass bead"). Each piece of glass was hand set in the opening and wood stops were cut and mitered to hold the glass in place. On the opposite side of the applied stop, the stop or "sticking," is milled into the muntin bar (see diagram 2). On the plus side, stop glazed doors are easily re-glazed should a light of glass get scratched or broken. The negative side to "stop glazing" is miter joints may not be tight and the higher labor cost to cut each miter is significant.

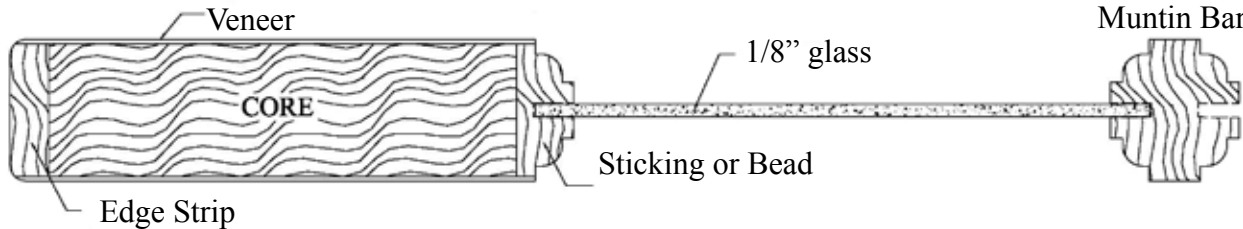
Today most of the glass doors that are produced in quantity are "clamp glazed" (also referred to as "pressed glazed" or "groove glazed"). The muntin bar is milled on both sides of the glass to create a groove for the glass. The bottom row of glass is dropped into the groove. The next step is to put the another muntin bar on top of that row of glass and so on until the top rail is placed on to the door. This method is much faster and less expensive than stop glazing a door. The down side to clamp glazed doors is that broken/scratched glass is much harder to replace (sticking must be removed via a router). If multiple lights of glass need to be replaced in a clamp glazed door then it is often cheaper to replace the whole door then it is to replace the glass.

The last method to glazing a multi-light-look door is using simulated divided lights (SDL). This method uses one piece of glass with interior/exterior grids to simulate a tru-divided look. You may find this method used on exterior doors that have radius muntin bars and in the door/window industry when using exterior cladding.

B&B's interior glass doors in common sizes and species are mostly clamp glazed. Doors with special glass and less common sizes such as 20", 22", 26" are mill-option stop glazed. Clamp glazing is the default glazing method on interior doors. Request for stop glazed doors (if not stock) would require a special quote.

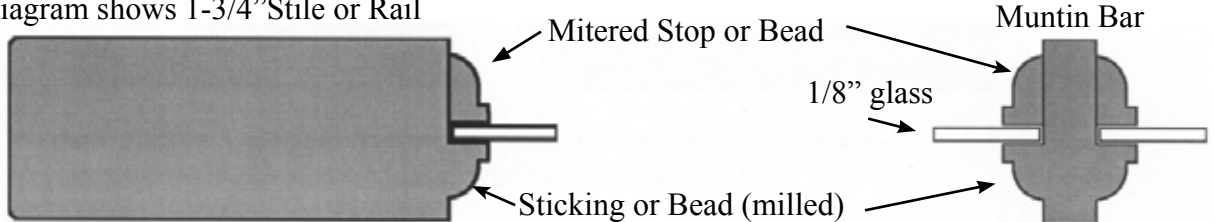
Clamp Glazed Cross Section

Diagram shows 1-3/8" Stile or Rail



Stop Glazed Cross Section - Diagram 2

Diagram shows 1-3/4" Stile or Rail



B&B Wood Products.
 26301 Richmond Road
 Bedford Hts., OH 44146
 Tel: 216-292-6555
 Fax: 216-292-6584
 Web: www.bbwood.com
 E-mail: sales@bbwood.com